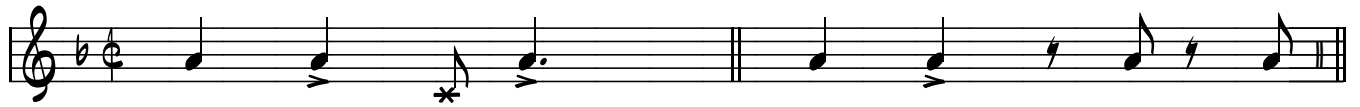


# Ipanema

## RYTMIK

Antonio Carlos Jobim

Guitar - INTRO - vers



3

Tamburin /  
Trommer - hihat/  
ride

Bas

*variation:*

Musical notation for the Tamburin/Trommer and Bas parts. The Tamburin part starts at measure 3 and consists of a series of eighth notes marked with 'x' (representing hits) over a steady eighth-note bass line. The Bas part starts at measure 3 and consists of a steady eighth-note bass line. A 'variation' section begins at measure 5, where the bass line changes to a more complex rhythmic pattern.

vers 1 A3 & solo



vers 2 (kvinde-vokal) A2

